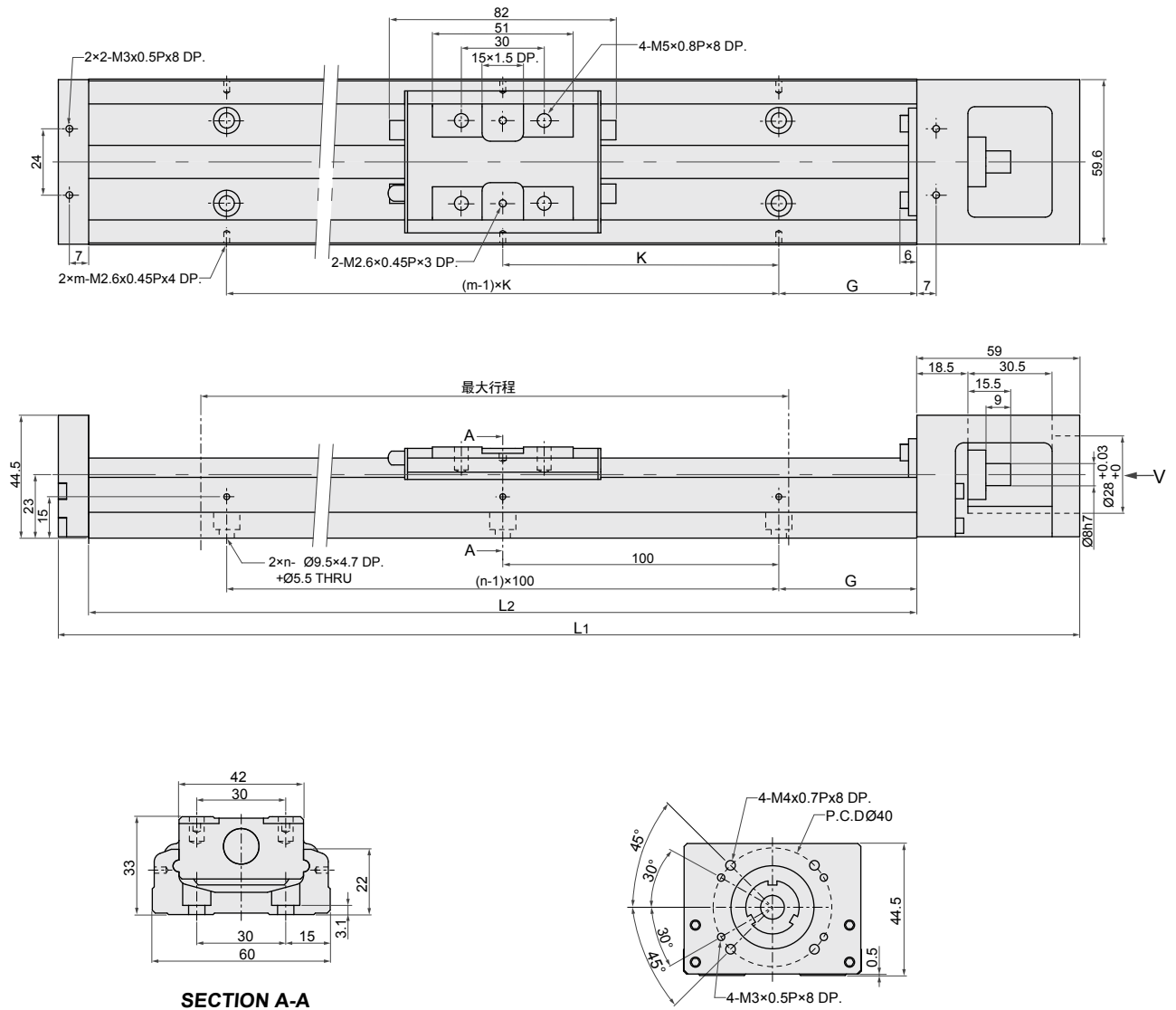


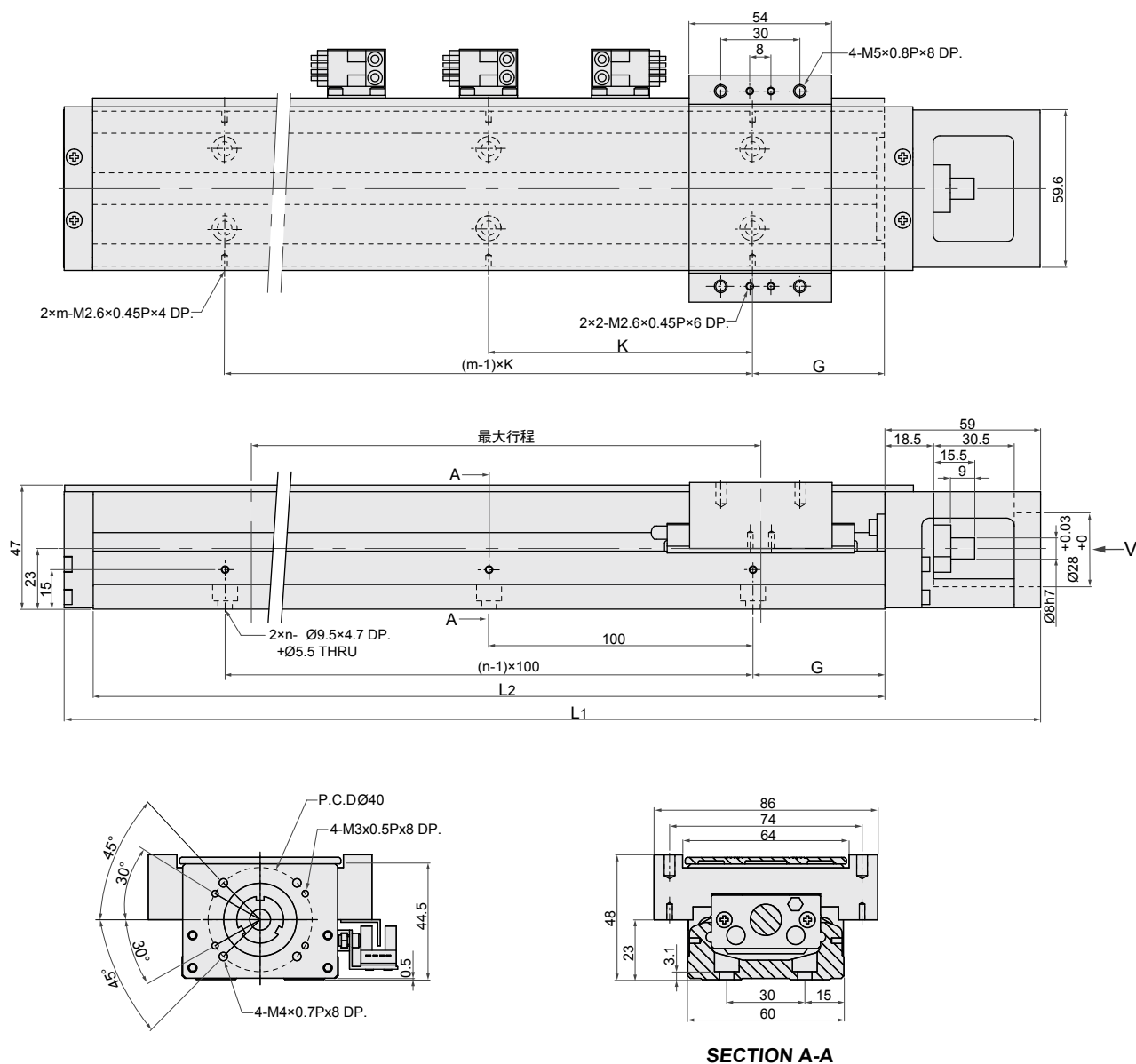
LMK60(D)型號尺寸



單位 (mm)

軌道長度L2 (mm)	全長L1 (mm)	最大行程 (mm)		G (mm)	K (mm)	n	m	重量 (kg)	
		A1滑座	A2滑座					A1滑座	A2滑座
150	220	60	-	25	100	2	2	1.5	-
200	270	110	-	50	100	2	2	1.8	-
300	370	210	135	50	200	3	2	2.4	2.7
400	470	310	235	50	100	4	4	3	3.3
500	570	410	335	50	200	5	3	3.6	3.9
600	670	510	435	50	100	6	6	4.2	4.6

LMK60(D)含護蓋型號尺寸

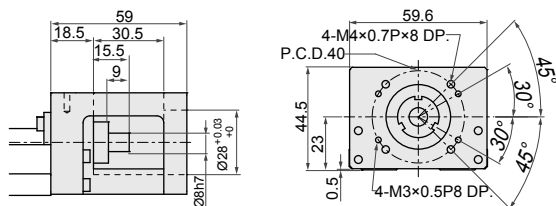


單位 (mm)

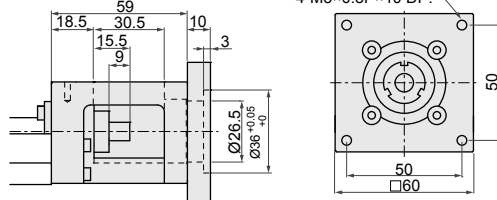
軌道長度L2 (mm)	全長L1 (mm)	最大行程 (mm)		G (mm)	K (mm)	n	m	重量 (kg)	
		A1滑座	A2滑座					A1滑座	A2滑座
150	220	60	-	25	100	2	2	1.7	-
200	270	110	-	50	100	2	2	2.1	-
300	370	210	135	50	200	3	2	2.7	3
400	470	310	235	50	100	4	4	3.3	3.6
500	570	410	335	50	200	5	3	3.9	4.2
600	670	510	435	50	100	6	6	4.6	5

LMK60連接法蘭

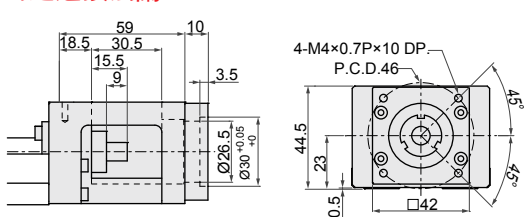
馬達座F0



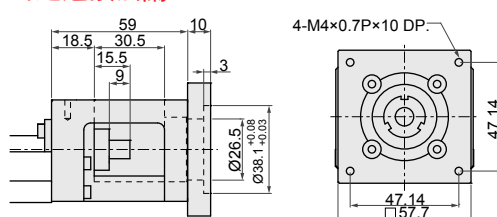
馬達連接法蘭F3



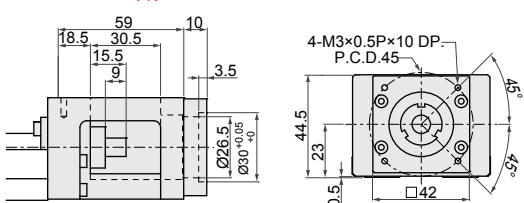
馬達連接法蘭F1



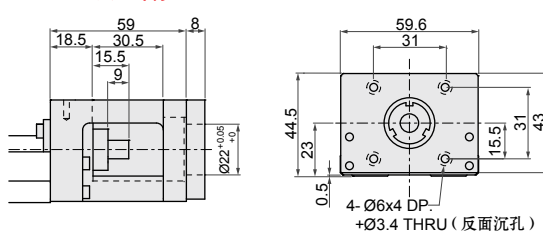
馬達連接法蘭F4



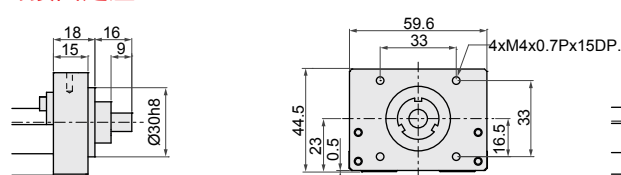
馬達連接法蘭F2



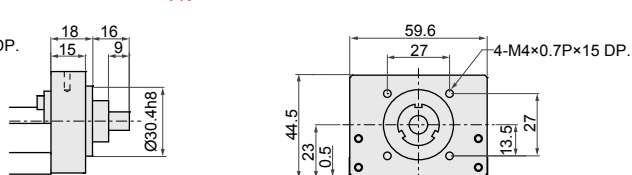
馬達連接法蘭F5



轉接固定座H0

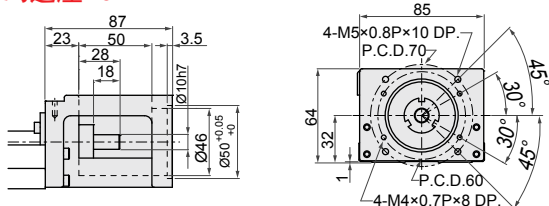


轉接固定座法蘭H1

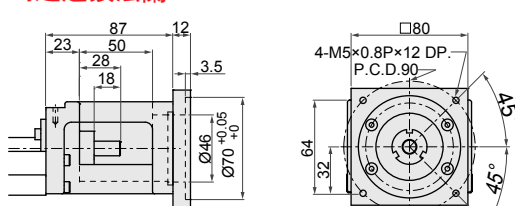


LMK86連接法蘭

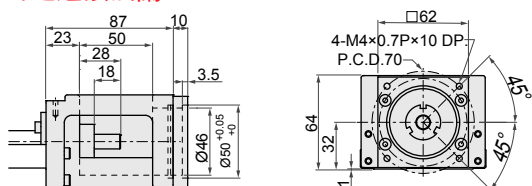
馬達座F0



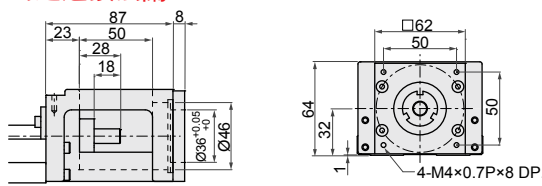
馬達連接法蘭F4



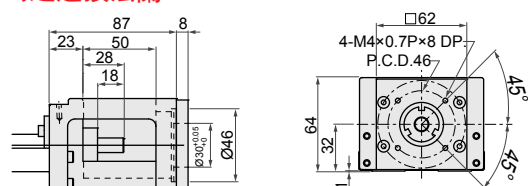
馬達連接法蘭F1



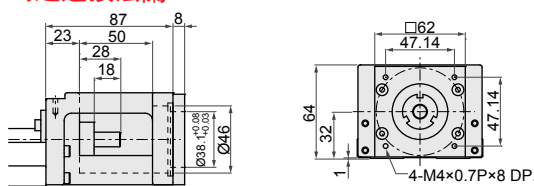
馬達連接法蘭F5



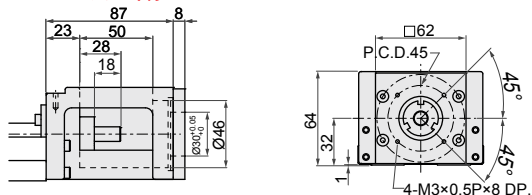
馬達連接法蘭F2



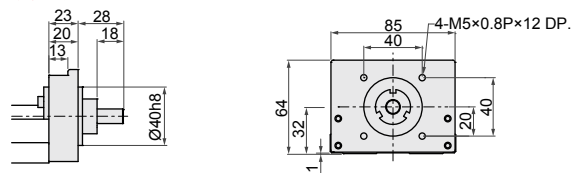
馬達連接法蘭F6



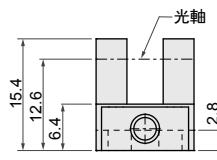
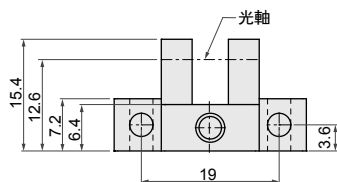
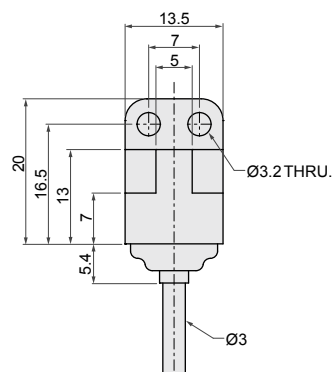
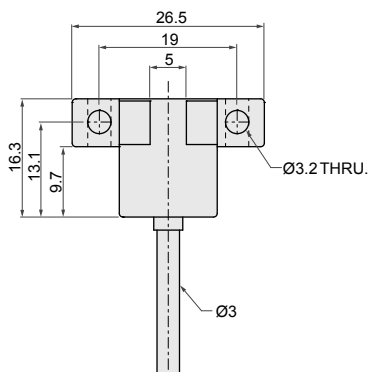
馬達連接法蘭F3



轉接固定座H0



極限開關



BS5-L1M

BS5-Y1M